



MAZAKA
HEAVY INDUSTRY

MW600

**PILE DRIVING MACHINES
GUARDRAIL & GROUNDSCREW**





MAZAKA
HEAVY INDUSTRY

MW600

PILE DRIVER MACHINE

KAZIK ÇAKMA MAKİNASI



ENGINE/MOTOR

YANMAR

HAMMER/ÇEKİÇ

1100 JOULE

MAST/ASANSÖR

3500 mm

TECHNICAL FEATURES

TEKNİK ÖZELLİKLER

Power Güç 36 kW / Stage 3
35 kW / Stage 5

DPF Filter DPF Filtresi Standart on Stage 5 Engine

Max operating pressure Maksimum çalışma basıncı 180 bar

Oil flow Yağ debisi 50 - 100 l

Hydraulic tank capacity Hidrolik tank kapasitesi 150 l

Diesel tank capacity Dizel tank kapasitesi 60 l

Double speed system Çift hız Standart

Gradeability Tırmanma Kabiliyeti 20°

Sidewalk Yanal Yürüyüş 10°

Total weight Toplam ağırlık 2950 kg

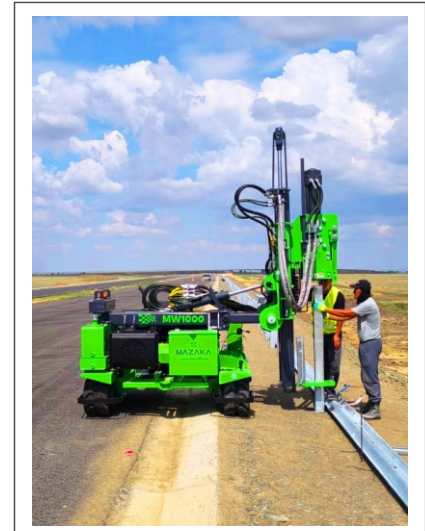
Transport Dimensions Taşıma Ölçüleri

Width/Genişlik 2065 mm
Height/Yükseklik 2340 mm
Length/Uzunluk 1670 mm

OPTIONAL EQUIPMENT / OPSİYONEL EKİPMANLAR

DTH - Auger - Post Extractor - GPS/GNSS - Remote Control
Hydromotor System For Ground Screw - Auto Leveling
Hammer Height Control System - Laser Meter

Kaya Delme - Toprak Burgusu - Kazık Çıkarma - GPS/GNSS
Uzaktan Kontrol - Zemin Vidalama Ekipmanı - Otomatik Seviyeleme
Çekiç Durdurma Sistemi - Lazer Metre



MAZAKA
GROUP



MAZAKA

HEAVY INDUSTRY



Mazaka Factory/Fabrika

- 📍 Mimarsinan OSB Mah. 7. Cadde No:24
Melikgazi/Kayseri/TÜRKİYE
- ☎️ +90 352 311 44 18
- 📞 +90 533 204 41 70
- ✉️ info@mazaka.eu

USA Office/Amerika Ofis

- 📍 25 Old Kings Hwy N.Ste13
Darien, CT 06820
- ☎️ +1 203 904 8074
- ✉️ america@mazaka.eu

Europe Office/Avrupa Ofis

- 📍 Industriestrasse 12-16, 42929
Wermelskirchen Germany
- ☎️ +49 2196 / 729 00 271
- ✉️ europe@mazaka.eu



www.mazaka.eu

Mazaka Heavy Industry is a Mazaka Group of Companies



MAZAKA
GROUP