



MAZAKA
HEAVY INDUSTRY

PILE DRIVER MACHINE
**OPTIONAL
EQUIPMENT**
CATALOGUE





COMPATIBLE WITH

MW600, MW1000, MW1200, MW1600, MW2000

TECHNICAL SPECIFICATIONS

PRODUCT CODE	DTH HAMMER	DRILLING BIT SIZE RANGE
DTH 3,5"SET	3,5"	90 mm - 102 mm
DTH 4"SET	4"	108 mm - 115 mm 127 mm - 140 mm
DTH 6"SET	6"	152 mm - 165 mm 190 mm - 203 mm
DTH 8"SET	8"	225 mm - 254 mm 302 mm

DTH (DOWN THE HOLE)

A down the hole drill, usually called DTH by most professionals, is basically a jackhammer screwed on the bottom of a drill string. The fast hammer action breaks hard rock into small cuttings and dust that are evacuated by a fluid. The DTH hammer is one of the fastest ways to drill hard rock.

Use the boring device fitted on the pile driver to make holes in rocks and unreinforced concrete.

The boring device requires compressed air for the percussion of the tool and to remove the dust from the hole.

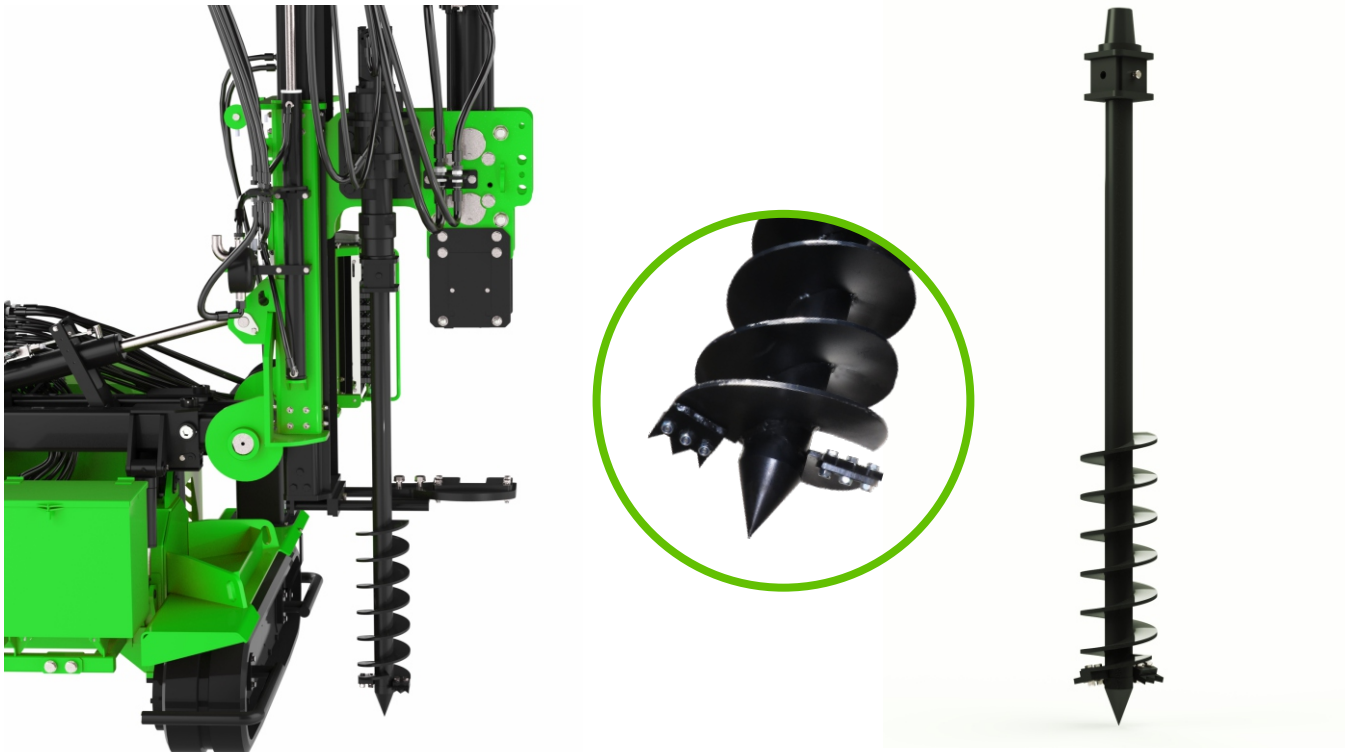
The air must be lubricated to avoid damage to the boring head.



AUGER (EARTH DRILLING)

INTRODUCTION

Our high-performance augers are designed for precision drilling in various applications, including solar farm installations, construction, and road barrier projects. Engineered for durability and efficiency, our augers provide exceptional performance in different soil



FEATURES & BENEFITS

- High Torque Performance: Multiple hydromotor options ensure compatibility with various drilling needs.
- Durability & Strength: Made from high-quality materials for longevity and reliability.
- Versatile Applications: Suitable for solar farms, road barriers, and general construction.
- Efficient Drilling: Designed for quick and effective penetration into different soil types.
- Easy Maintenance: Low-maintenance design for extended use with minimal upkeep.

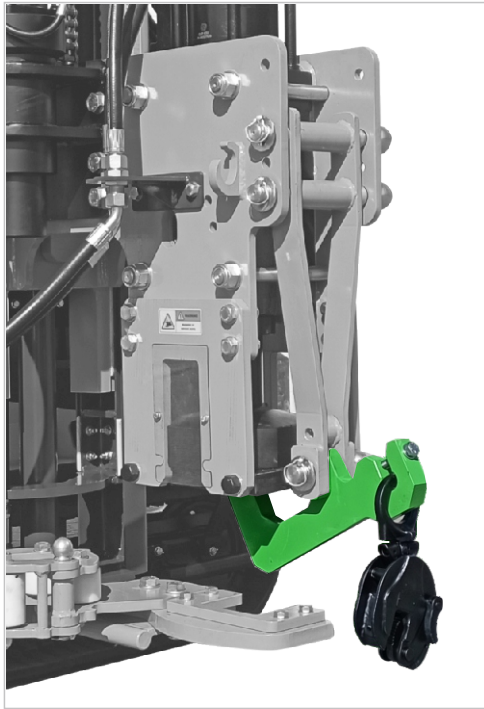
TECHNICAL SPECIFICATIONS

PRODUCT CODE	PRODUCT NAME
EDL2016	200 x 1600 mm
EDL3016	300 x 1600 mm
EDL4016	400 x 1600 mm

PRODUCT CODE	HYDROMOTOR	RPM
GSD15	1500 NM	60 – 80
GSD30	3000 NM	30 – 60
GSD60	6000 NM	30 – 60
GSD80	8000 NM	15 – 30
GSD120	12000 NM	10 – 20

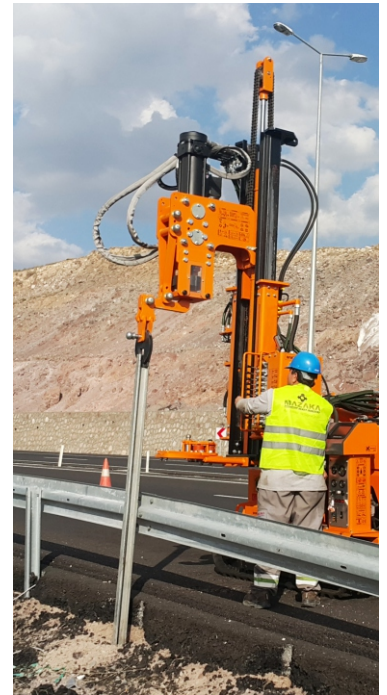
COMPATIBLE WITH

MW600, MW1000, MW1200, MW1600, MW2000



MANUEL POST EXTRACTOR

The pile extractor can be applied under the head of the pile driver machine, on forklifts and cranes. It is specially designed for piles guard-rail extraction, iron sheet piles and light profiles. The auxiliary of some self tightening clamps and some special levers enables a better gripping and release of the piles.



PRODUCT CODE	PRODUCT NAME
PE200M	POST EXTRACTOR (MECHANIC) 2T CAPACITY
PE200H	POST EXTRACTOR (HYDRAULIC) 2T CAPACITY

APPLICATION: MW600 - MW1000 - MW1200 - MW1600 - MW2000



HYDRAULIC POST EXTRACTOR





REMOTE CONTROL

The remote control allows to operate the piledriver without being close to the machine, both in piling and orientation movements.

This is possible thanks to the use of Danfoss electro-proportional distributors, which are available either for crawler control alone or for the whole pile driver.



APPLICATION

MW600 - MW1000 - MW1200 - MW1600 - MW2000

PRODUCT CODE	PRODUCT NAME
RC100-FBM	REMOTE CONTROL (ONLY FORWARD AND BACKWARD MOVEMENT)
RC101-AFC	REMOTE CONTROL (ALL FUNCTION 9 LEVEL)



AUTO LEVELLING

The system of automatic verticality allows you to always have at hand the perpendicularity of the column with the ground.

Just press a button and the column will be positioned perfectly vertically with respect to the ground.



APPLICATION

MW600 - MW1000 - MW1200 - MW1600 - MW2000

PRODUCT CODE	PRODUCT NAME
AL110	AUTO LEVELLING EQUIPMENT



STABILIZER CYLINDER

Stabilized cylinders in sloping lands provide possibilities for the machines to run safe. Referring to your demand, stabilizing feet could be fixed to the pile driving machine.



APPLICATION
MW600 - MW1000 - MW1200 - MW1600 - MW2000

PRODUCT CODE	PRODUCT NAME
SC201	STABILIZER CYLINDER





MAZAKA

HEAVY INDUSTRY



Mazaka Factory/Fabrika

- 📍 Mimarsinan OSB Mah. 7. Cadde No:24
Melikgazi/Kayseri/TÜRKİYE
- ☎️ +90 352 311 44 18
- 📞 +90 533 204 41 70
- ✉️ info@mazaka.eu

USA Office/Amerika Ofis

- 📍 25 Old Kings Hwy N.Ste13
Darien, CT 06820
- ☎️ +1 203 904 8074
- ✉️ america@mazaka.eu

Europe Office/Avrupa Ofis

- 📍 Industriestrasse 12-16, 42929
Wermelskirchen Germany
- ☎️ +49 2196 / 729 00 271
- ✉️ europe@mazaka.eu



www.mazaka.eu

Mazaka Heavy Industry is a Mazaka Group of Companies



MAZAKA
GROUP